

Violoncello 2

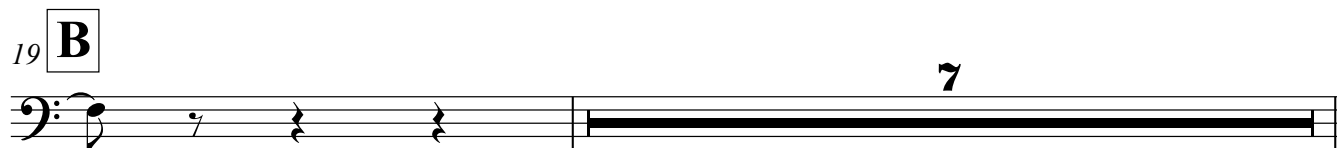
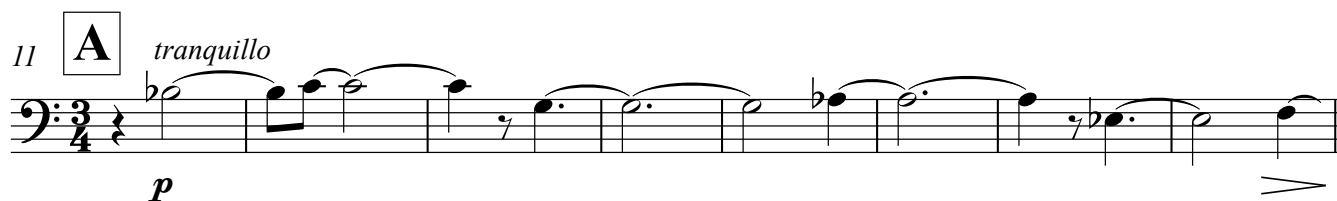
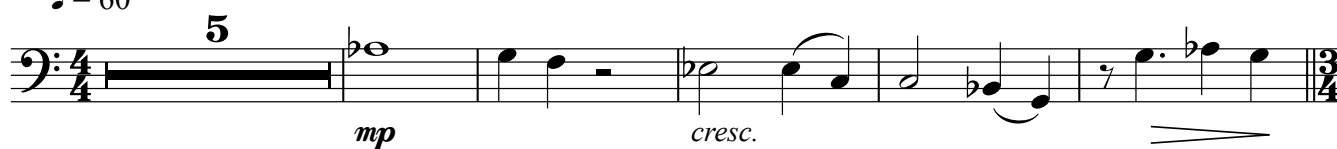
Sex and Death at Covent Garden

1. Intrada

Lento

Charlie Barber

♩ = 60



27 **C**

p *cresc.* *poco a poco* *mf*

34 **D**

p *cresc.* *mf*

43

cresc. *f* *dim.* *p*

51 **E** mute in con sord.

p

57 **Rit.** **Attacca** mute out

p

2. Recitative + Aria

♩ = 116

63 **F** senza sord.

f *f* *p*

69

f *p*

76 **G**

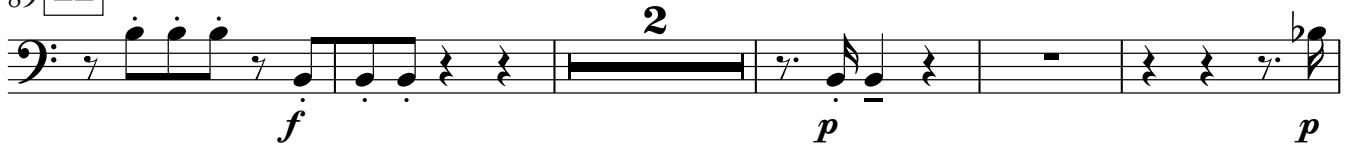
p *p*

Violoncello 2

84



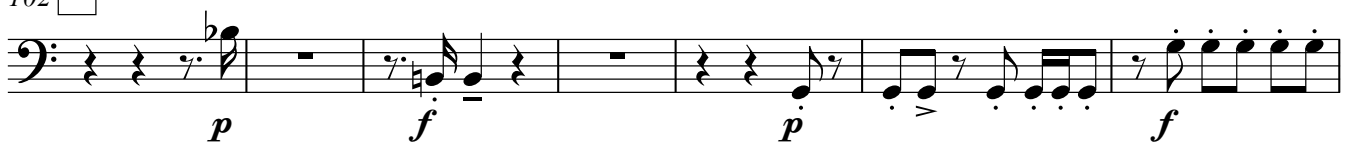
89 **H**



96



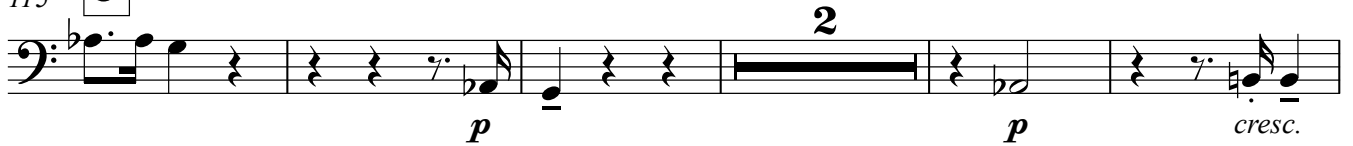
102 **I**



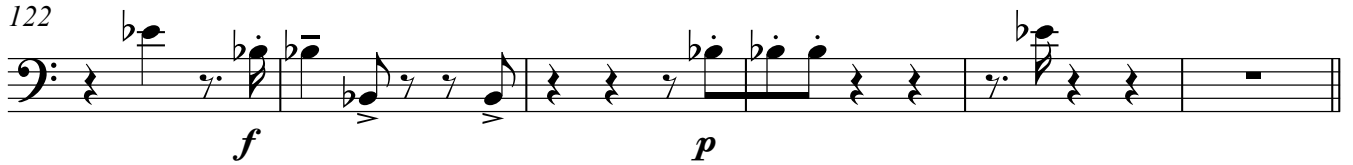
109



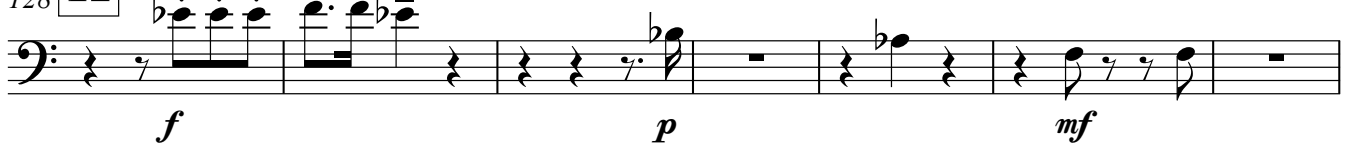
115 **J**



122



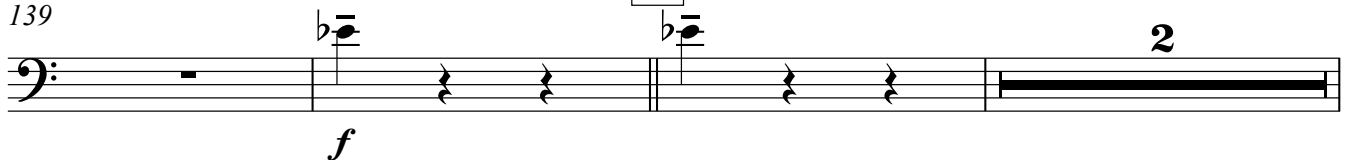
128 **K**



135



139



Violoncello 2

144 *mf* *cresc.* *f* *legato*

152 *p* *cresc.* *f* *p* **M**

159 *f* **2**

167 **N** **3** *mp* **2** *p* *mf*

178 *p* *p* *f* **P**

187 *mp* *p* *cresc.* *mf* *p*

195 **Q** **10** *mp* *p* *cresc.*

212

218 **R** *mf* *dim.* *p* *cresc.* *mf*

Violoncello 2

225 **Attacca**

f *dim.* *p*

3. Allegro

♩ = 132

233 **S**

p *cresc.* *f* *p* *f* *p* *cresc.* *f*

239

f *f*

255

p *f*

265 **T**

pp

270

p

275

cresc.

280

mf

284

f

Violoncello 2

289 **U**[illegible]

299

305 **V**

311

511

320

320

mf *f* *p*

327

327

cresc. **f** **mf**

W **11**

343

343

f *mf* *sf*

Violoncello 2

351 **X** 2

pp

358

cresc. *p* *cresc. poco a poco*

365

cresc.

372 **Y**

f *dim.*

378

mf

385

p *cresc.*

391 **Z** 2

mf *p* *cresc.* *f* *p < f*

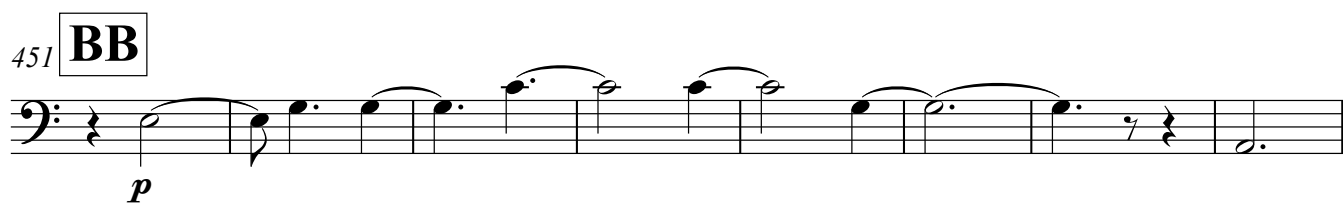
398

mf *pp* *sim.*

405

sf *sf* *sf* 5

Violoncello 2



Violoncello 2

467 **CC** arco

f marc.

473

478

482 **DD**

f sf

2

490

sf f

495

2

f

2

502



506

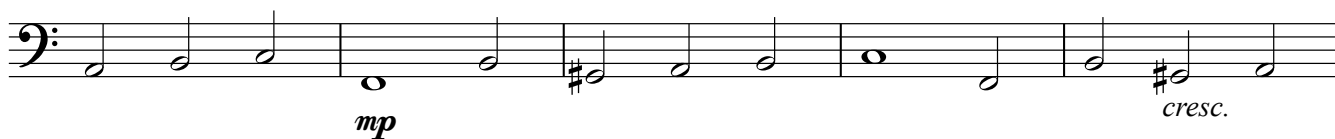


4. Cadenza

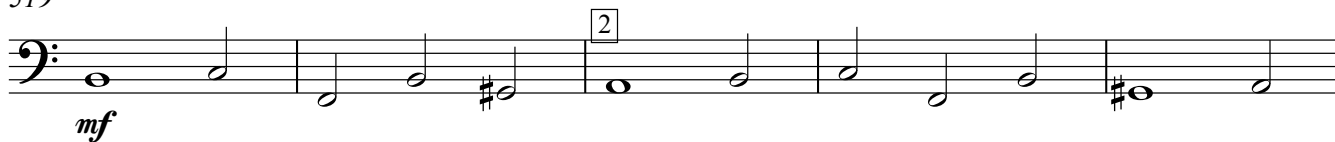
Adagio

 $\text{♩} = 60$ 509 **EE**

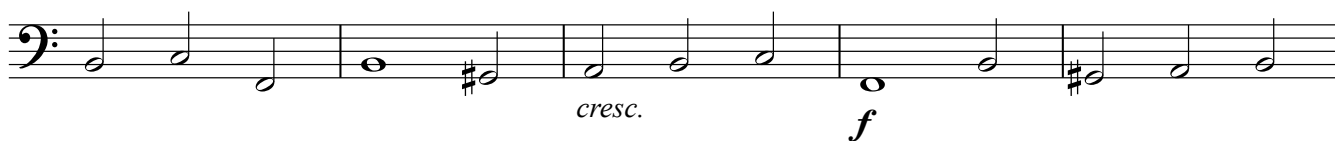
514



519



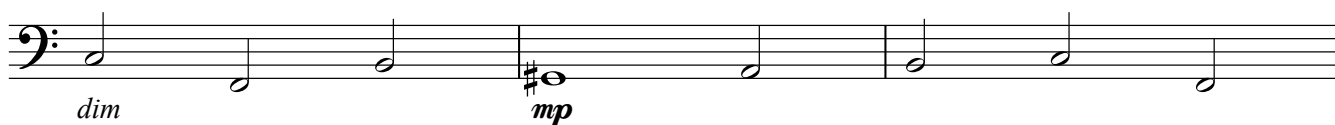
524



529



534



537

Rall.

